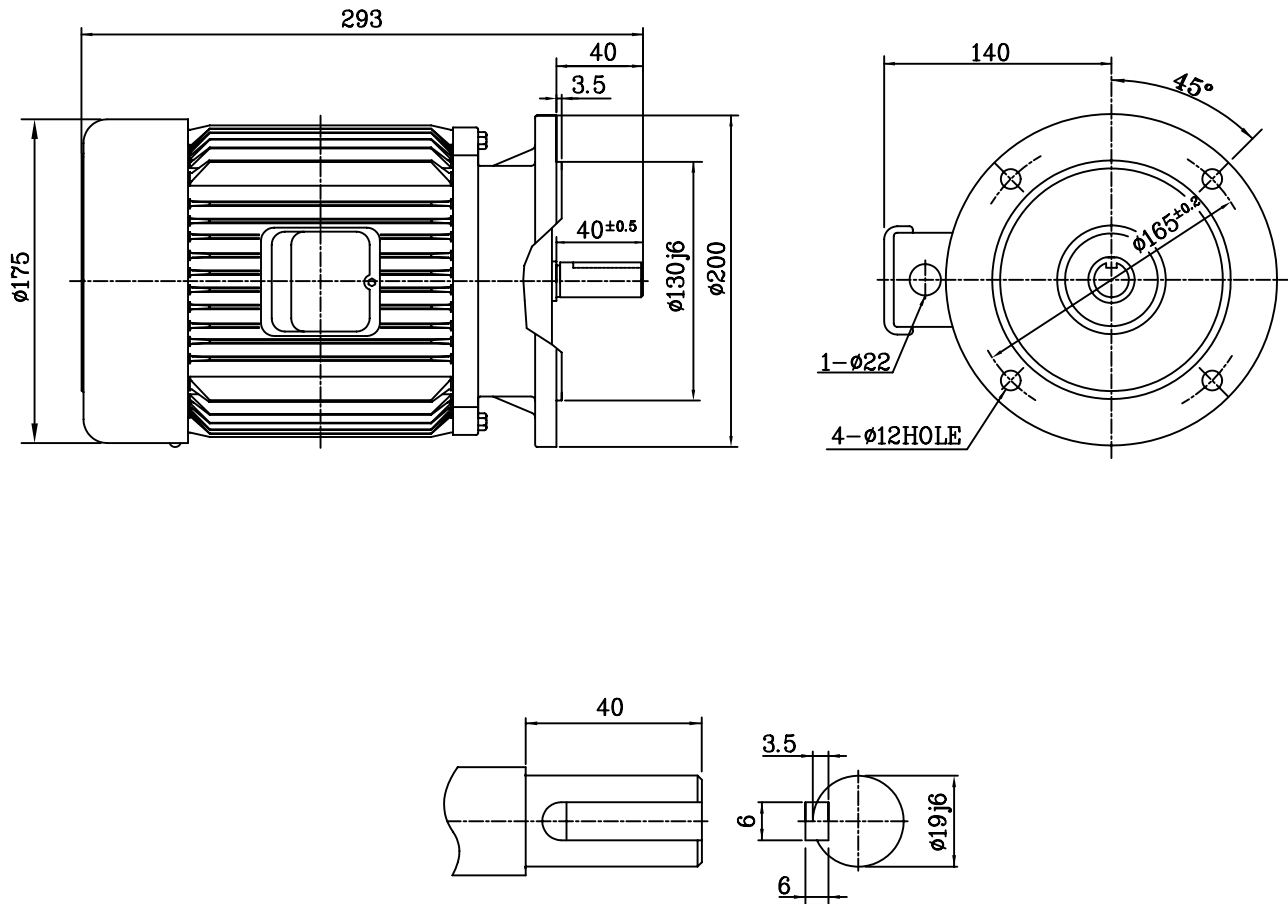


OUTLINE DIMENSION



SHAFT EXTENSION

<NOTE>

1. TYPE : TEFC(Totally Enclosed Fan Cooled)

FOOTLESS MOUNTED TYPE

2. THE TOLERANCE FOR THE KEY DIMENSIONS IS IN ACCORDANCE WITH KS B 1311-84

3. THE TERMINAL BOX MAY BE ROTATED STEPS OF 90°

4. CAST IRON FRAME AND END BRACKETS.

5. STAINLESS STEEL NAME PLATE WITH CONNECTION DIAGRAM.

6. STEEL FAN COVER AND STEEL TERMINAL BOX.

FRAME NO.	OUTPUT (kW)	POLE (P)	Hz	VOLTS (V)	INS. CLASS	PROTECTION	RATING	BEARING NO.		APPROX. WEIGHT (Kg)
								DRIVE	OPP.D.	
FF165 (80)	0.4	6	60	220/380	F	IP44	CONT.	6204ZZ	6203ZZ	20.5

UNIT	mm	SCALE	N S	PROJECT'N	3rd Angle	TITLE	OUTLINE
DESIGNED		CHECKED		APPROVED			
2009.06.08 A.R.LEE		2009.06.08 H.J.KIM		2009.06.08 H.J.KIM		SUBJECT	FF165, B5
HIGEN Motor co., Ltd.						DWG. NO.	DW-KMI-400K8F