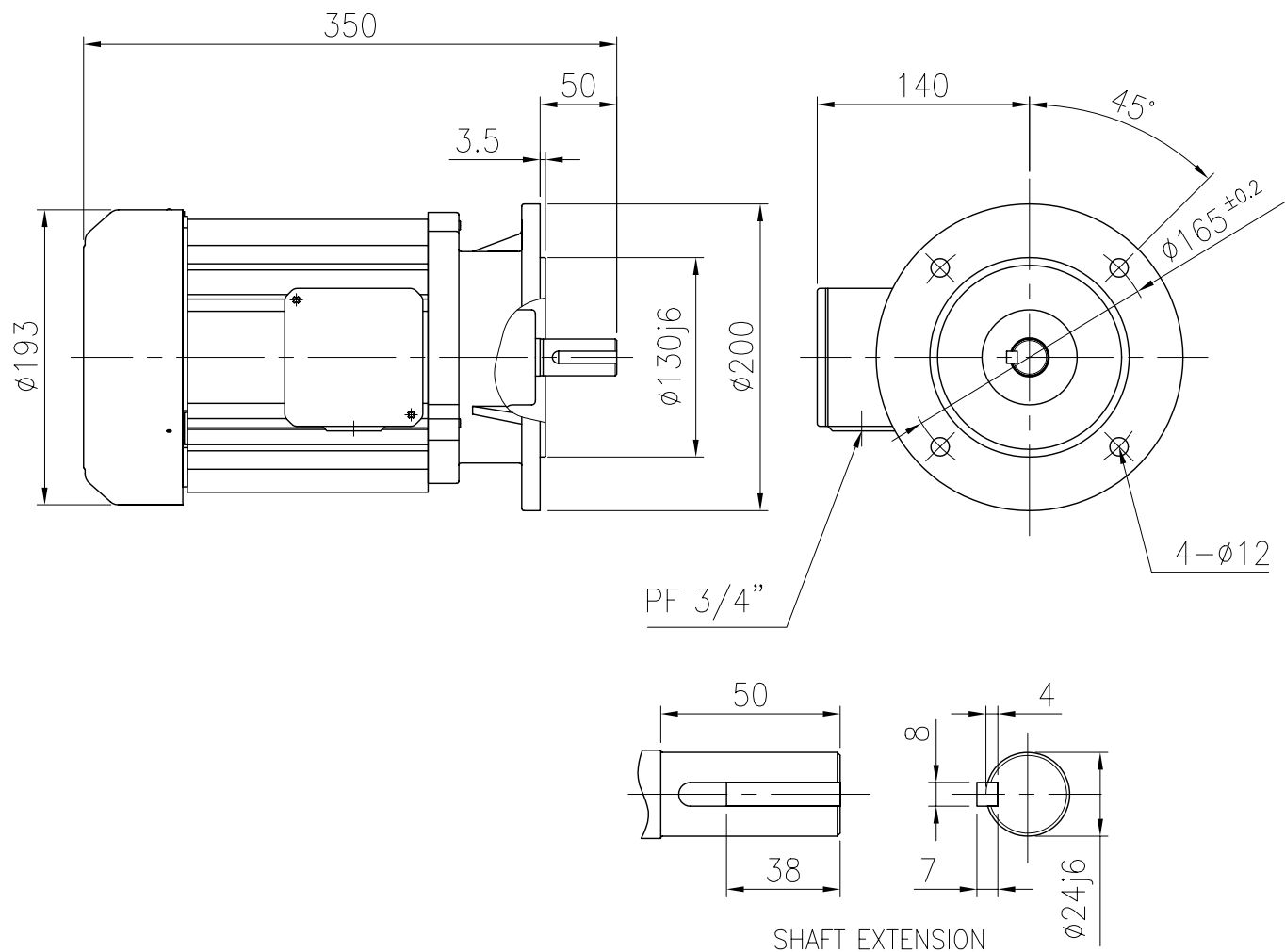


OUTLINE DIMENSION



<NOTE>

1. TYPE : TEFC(Totally Enclosed Fan Cooled) FOOTLESS MOUNTED TYPE
2. THE TOLERANCE FOR THE KEY DIMENSIONS IS IN ACCORDANCE WITH KS B 1311-84
3. THE TERMINAL BOX MAY BE ROTATED STEPS OF 90°
4. ALUMINUM FRAME AND CAST IRON END BRACKETS.
5. ALUMINUM STICKER NAME PLATE
6. STEEL FAN COVER AND ALUMINUM TERMINAL BOX.

FRAME NO.	OUTPUT (kW)			INS. CLASS	PRO-TEC-TION	RA-TING	BEARING NO.					
							2 P		4 P		6 P	
	2P	4P	6P				DRIVE	OPP.D.	DRIVE	OPP.D.	DRIVE	OPP.D.
FF165	1.5	—	—	F	IP54	CONT.	6205ZZ	6204ZZ	—	—	—	—

UNIT	mm	SCALE	$\frac{N}{S}$	PROJECT'N	3rd Angle	TITLE	OUTLINE
DESIGNED		CHECKED		APPROVED			
2008.06.16 S.M.KIM		2008.06.16 H.K.KIM		2008.06.16 H.J.KIM		SUBJECT	FF165, V1
HIGEN Motor co., Ltd.						DWG. NO.	DW-KMH02HK3FI